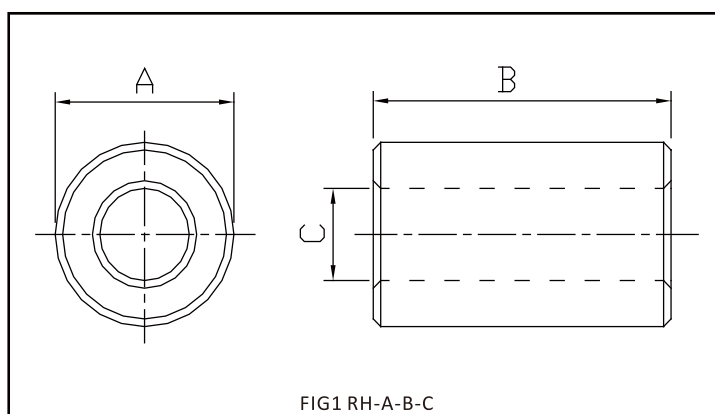


FIG1 RH-A-B-C

RH

型号 TYPE	图例 FIG.	尺寸 Dimensions(mm)		
		A	B	C
RH-1.4-4-0.8	1	1.40±0.10	4.00±0.1	0.80±0.07
RH-3.0-12-1.0	1	3.00±0.15	12.00±0.4	1.00±0.1
RH-3.5-5.7-0.8	1	3.50±0.15	5.70±0.4	0.80±0.1
RH-3.5-4-1.0	1	3.50±0.15	4.00±0.3	1.00±0.1
RH-3.5-4.5-1.0	1	3.50±0.15	4.50±0.4	1.00±0.1
RH-3.5-6.0-1.0	1	3.50±0.15	6.00±0.4	1.00±0.1
RH-3.5-6.0-1.5	1	3.50±0.15	6.00±0.4	1.50±0.15
RH-3.5-4-1.2	1	3.50±0.15	4.00±0.3	1.20±0.15
RH-3.5-5-1.2	1	3.50±0.15	5.00±0.4	1.20±0.15
RH-3.5-6-1.2	1	3.50±0.15	6.00±0.4	1.20±0.15
RH-3.5-3-1.3	1	3.50±0.15	3.00±0.2	1.30±0.15
RH-3.5-3-1.8	1	3.50±0.15	3.00±0.2	1.80±0.15
RH-3.5-5-1.3	1	3.50±0.15	5.00±0.4	1.30±0.15
RH-3.5-1.3-1.5	1	3.50±0.15	1.30±0.15	1.50±0.15
RH-3.5-4.5-1.5	1	3.50±0.15	4.50±0.4	1.50±0.15
RH-3.5-5-1.5	1	3.50±0.15	5.00±0.4	1.50±0.15
RH-4-3.2-2	1	4.00±0.2	3.20±0.2	2.00±0.2
RH-4-10-2	1	4.00±0.2	10.00±0.4	2.00±0.2
RH-5-13-2.2	1	5.00±0.5-0.15	13.00±0.6-0.2	2.20±0.25
RH-5-13-3.0	1	5.00±0.4-0.2	13.00±0.5-0.2	3.00±0.25-0.1
RH-6-8-3	1	6.00±0.2	8.00±0.3	3.00±0.2
RH-6-10-3	1	6.00±0.15	10.00±0.25	3.00±0.15
RH-6-12-3	1	6.00±0.2	12.00±0.3	3.00±0.15

镍锌氧铁材料规格尺寸 Specification and Dimensions of NiZn Ferrite Material



RH

型号 TYPE	图例 FIG.	尺寸 Dimensions(mm)		
		A	B	C
RH-9-13.6-5.3	1	9.00±0.2	13.60±0.5	5.30±0.3
RH-12-23-5.2	1	12.00±0.3	23.00±0.5	5.20±0.3
RH-12-15.3-7.3	1	12.00±0.3	15.30±0.5	7.30±0.3
RH-12.7-10-7.9	1	12.70±0.3	10.00±0.3	7.90±0.3
RH-12.7-12.7-7.9	1	12.70±0.3	12.70±0.3	7.90±0.3
RH-14.3-28.6-6.35	1	14.30±0.5	28.60±0.8	6.35±0.3
RH-15.9-50.8-7.9	1	15.90±0.4	50.80±1.0	7.90±0.3
RH-16-10-9.0	1	16.00±0.3	10.00±0.3	9.00±0.3
RH-16-16-9.0	1	16.00±0.3	16.00±0.3	9.00±0.3
RH-16-17-9.0	1	16.00±0.3	17.00±0.3	9.00±0.3
RH-16-28-9.0	1	16.00±0.3	28.00±0.6	9.00±0.3
RH-17.5-13.5-9.5	1	17.50±0.4	13.50±0.4	9.50±0.3
RH-17.5-28.5-9.5	1	17.50±0.4	28.50±0.75	9.50±0.3
RH-17.5-35-9.5	1	17.50±0.4	35.00±0.85	9.50±0.3
RH-17.7-28.8-9.4	1	17.70±0.4	28.80±0.75	9.40±0.3
RH-18-28-9.7	1	18.00±0.5	28.00±0.8	9.70±0.3
RH-18.7-28.6-10.15	1	18.70±0.5	28.60±0.8	10.15±0.3
RH-18.7-50.8-10.15	1	18.70±0.5	50.80±1.0	10.15±0.3
RH-25.9-28.6-12.8	1	25.90±0.6	28.60±0.8	12.80±0.5
RH-26-28.5-13	1	26.00±0.6	28.50±0.8	13.00±0.5
RH-28.5-28.6-13.8	1	28.50±0.6	28.60±0.8	13.80±0.5
RH-31.1-50.8-19.05	1	31.10±0.85	50.80±1.0	19.05±0.6